



Figure 1-4 Each of these "hills" in the small intestine contains blood vessels ready to carry digested food throughout the body. Why is a "hilly" small intestine better suited to absorbing digested food than a smooth small intestine would be?

ABSORBING CELLS The small intestine is a tube-like structure located below the liver and the stomach. The small intestine plays an important role in the process of digestion. Lining the inside of the small intestine are cells that absorb digested food and then transport it to the bloodstream. The blood-stream (also made of cells) delivers the digested food to all parts of the body. Remember, food provides the body with the energy it needs to stay alive. In order to do this, the food must come into contact with huge numbers of absorbing cells.

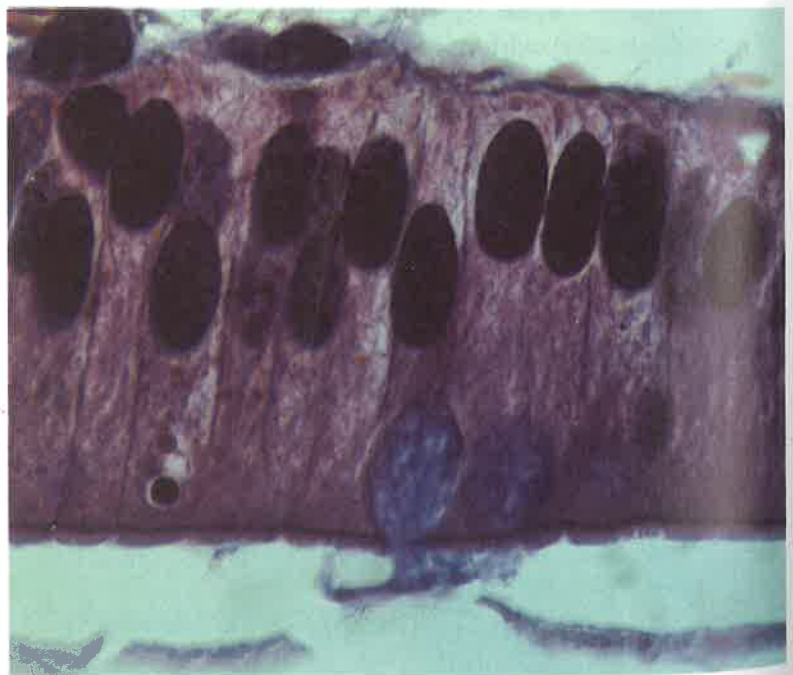


Figure 1-3 The illustration shows some of the basic parts of a typical cell. Can you find the corresponding parts in the photograph of cells of the small intestine?

